

Superreel® - Industrial Reel

AESC510D SERIES



FEATURES

- To handle live electric cable/cord.
- Powered by electric motor. Large capacity . Auto-distribution.
- Silver alloy slip ring.
- Durable abrasion and corrosion resistant baked-on power coat finish.
- Rugged construction: Steel drum and all bolted construction. Vibration-proof self-locking fasteners.
- Low maintenance: Dual main bearings never need lubrication.
- Compact for critical space requirements.
- Shipped completely assembled, ready to install.

1

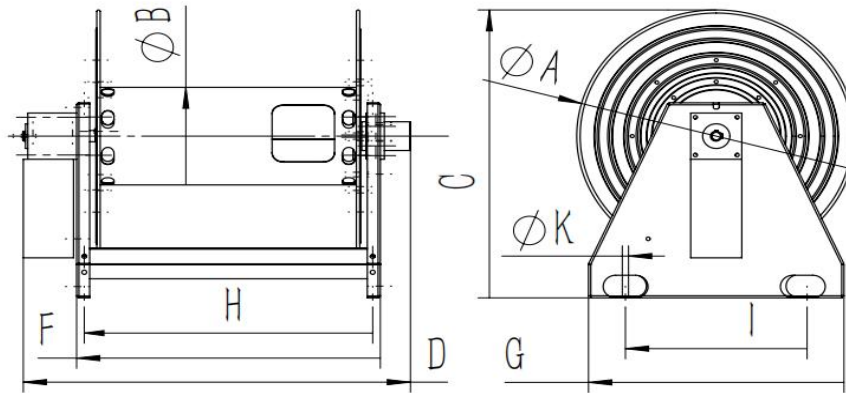


WWW.SUPERREEL.COM

Email: sales@superreel.com

Superreel® - Industrial Reel

DIMENSIONS



P/N	Port&core number	HOSE-ID. or CABLE-square	Pressure or I _{max}	Working length	Reel inlet	Cable outlet	A	B	C	D	E	F	G	H	I	J	K
AESC510D0406020100	4	2.5 ²	20A	100m	Bare wire	Bare wire	475	189	560	653	475	386	442	359	320	4	11
AESC510D0408030100	4	4 ²	30A	100m	Bare wire	Bare wire	475	189	560	653	475	386	442	359	320	4	11
AESC510D0409050060	4	6 ²	50A	60m	Bare wire	Bare wire	475	189	560	653	475	386	442	359	320	4	11
							Dimensions are in millimeters										

