

# Superreel® - Industrial Reel

## ESSC530F SERIES



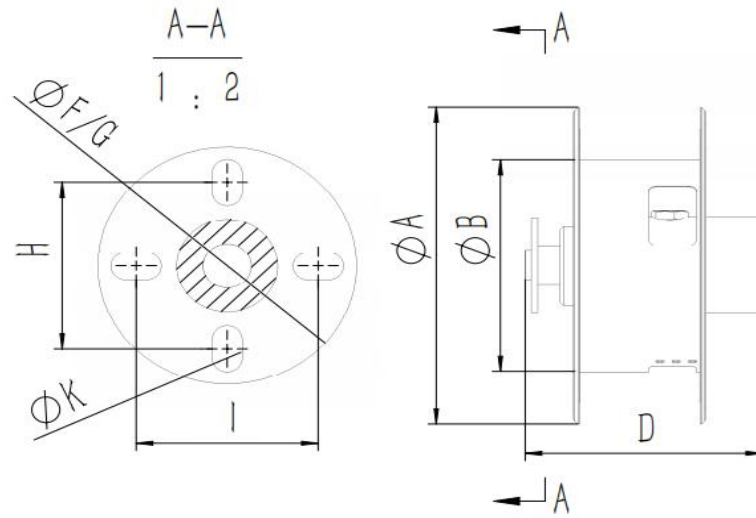
## FEATURES

- To handle live electric cable/cord.
- Professional grade heavy duty steel construction.
- Silver alloy slip ring.
- Available in Left or Right version
- Fixation by mounting flangel
- Self winding by permanent spring force
- Reel drive springs manufactured from high-quality, scaleless blue tempered steel.
- Durable abrasion and corrosion resistant baked-on power coat finish.
- Adjustable bumper stop allow any desired length of cord or cable to be maintained outside the reel.
- Compact for critical space requirements.



# Superreel® - Industrial Reel

## DIMENSIONS



P/N	Port&core number	HOSE-ID. or CABLE-square	Pressure or lmax	Working length	Reel inlet	Cable outlet	A	B	C	D	E	F	G	H	I	J	K
ESSC530F0408030025	4	4 <sup>2</sup>	30A	25m	Bare wire	Bare wire	530	270	530	337	530	120	120	100	100	4	13
ESSC530F0409050025	4	6 <sup>2</sup>	50A	25m	Bare wire	Bare wire	530	270	530	337	530	120	120	100	100	4	13
ESSC530F0410065020	4	10 <sup>2</sup>	65A	20m	Bare wire	Bare wire	530	270	530	337	530	120	120	100	100	4	13
ESSC530F2005010025	20	1.5 <sup>2</sup>	10A	25m	Bare wire	Bare wire	530	270	530	337	530	120	120	100	100	4	13

Dimensions are in millimeters

